



Morag Schonken, *This Way Home*, mixed media, various dimensions, 2007.

In 2005, **COLETTE BALCAEN** obtained her Fine Arts Degree at the University of Manitoba. Issues that affect women, particularly within the domestic domain and grind of daily life, motivate her to create installations and performance projects.

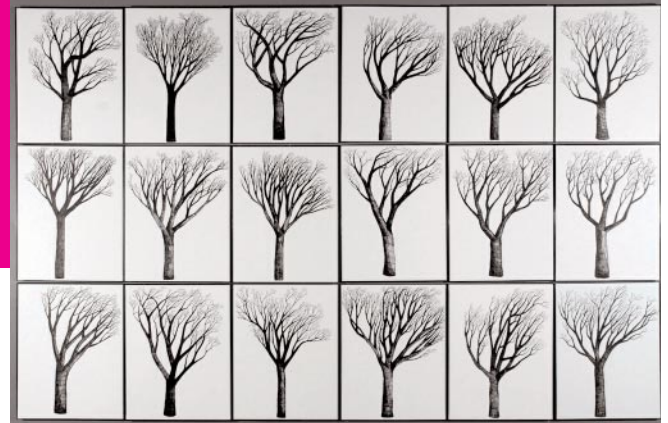
**KALE BONHAM** is a painter who graduated in 2006 from the University of Manitoba School of Art. Her work is influenced by both pop and Aboriginal cultures. Art is her way down the rabbit hole.

**PAULINE BRAUN** spent most of her life in Northern Manitoba. She has lived and worked in Winnipeg since 2003. Her works are visual fragments of personal wonders that delight, amuse, inspire and amaze her.

**FIXED / VARIABLE**  
*Foundation Mentorship Program*  
*exhibition 2006/2007*

MAWA invites you to join us for the First Annual Foundation Mentorship Program Exhibition.

Ironically borrowing a phrase from the world of finance, *Fixed/Variable* refers to the process experienced by the artists in the Foundation Mentorship Program. What was taken for granted as "fixed" at the beginning of the year became "variable": perceptions shifted and rearranged; ideas, artworks, and artists have grown, evolved, and changed.



Suzie Smith, *Forest*, ink on paper, variable dimensions, 2007. Photo Sheila Spence.

Pauline A. Braun, *Untitled*, monotype with Polaroid emulsion transfer on magnani pescia. 31" x 44". 2007.



**611 MAIN ST., SEPTEMBER 11-29**  
**OPENING 7PM TUESDAY SEPTEMBER 11**

**PERFORMANCE BY**  
**COLETTE BALCAEN AT 7PM SHARP**



Colette Balcaen, *Carol Shields*, quilt, 24" x 36", 2007.

**JEANNINE CHUDZIK** has lived and worked in Winnipeg since 1991. She currently resides in Nelson, B.C. where she continues her art practice. A shift in focus from jewelry-making has resulted in her exploration of mixed media, particularly abstract and symbolic painting.

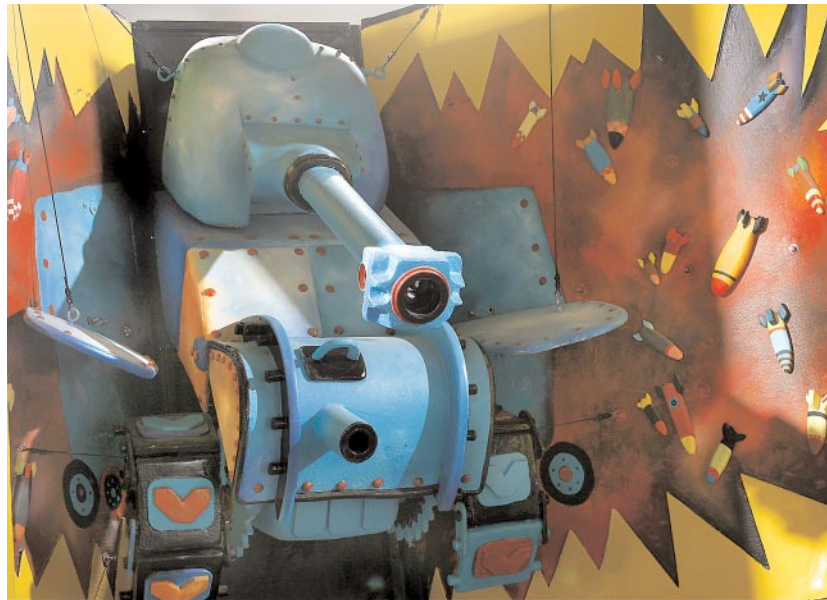
**MIA FEUER** is a sculptor whose imagery integrates playful elements with those that suggest pain, violence and sometimes death. Her recent travels to Israel and Palestine to work with children from both sides of the conflict influence her new work.

**LEAH FONTAINE**, a First Nations artist, has been employed in the performing and visual arts communities throughout Canada. Much of her artwork is connected to her Dakotah/ Anishinaabe heritage, and is intuitive and iconographic.

**MORAG SCHONKEN**, born in Zimbabwe, is a fiber-based installation artist. She has a Fine Arts diploma from the Toronto School of Art. In her work, she seeks to weave a personal history of a journey remembered, embedded in skin.

**SUZIE SMITH** uses a variety of different media including silkscreen, textiles, drawing and video to explore existing concepts of fine art and craft, public and personal space, and the fascination and critique of popular culture.

Mia Feuer, *Pop-Up Book* 2006, Interactive Front Detail, mixed media, open 6' x 10' x 14', closed 6' x 10' x 3', 2006.



## INSIDE

- |  |                              |
|--|------------------------------|
| 1 Fixed / Variable                             | 4 Heads Up!                  |
| 2 First Friday with Leah Fontaine              | 5 Members News               |
| 3 Aboriginal Women Artists and Mentors Program | 7 Opportunities              |
| 4 Member's Gallery                             | 8 Calls for Submissions      |
|  | 9 MAWA Honours Aganetha Dyck |

**LEAH FONTAINE** Visual Artist, BA Theatre, BFA Drawing, MA Candidate (Native Studies)

**12 NOON, OCTOBER 5, 611 MAIN STREET**

## *The Evolution of Indigenous Traditional Female Art Practices in Contemporary Art*

In the recent past, First Nations women in art have assumed the task of keeping culture and history alive by reinventing past traditional art forms like birchbark biting and bead work into contemporary creative expressions. This session will be a brief historical introduction about the utilization of traditional and contemporary art aesthetics and its recent developments in art for, about and by Indigenous women artists today.

BRING YOUR LUNCH! ALL WELCOME!

# THE ABORIGINAL WOMEN ARTISTS AND MENTORS (AWAM) PROGRAM

AWAM

The Aboriginal Women Artists and Mentors (AWAM) Program is the culmination of growing interest by Aboriginal and non-Aboriginal communities to use art and mentorship as a vehicle for education and personal development. AWAM will bring together women through art, culture, and mentorship, in unique programming organized by Mentoring Artists for Women's Art (MAWA).

Both youth and adult mentorship programs will use an Aboriginal perspective as a philosophical base to build leadership, self-confidence and critical awareness. AWAM will encourage creative cultural expression by, for, and about Aboriginal women and youth. MAWA and AWAM look forward to engaging Aboriginal women and youth in collaborative creative and educational art initiatives through these new programs.

**Note:** *Although these programs have an Aboriginal focus, women artists of all cultural backgrounds are most welcome to attend!*

## The Eastern Door

In many First Nations cultures, the Eastern Door is the opening for new beginnings. Through MAWA and AWAM, this drop-in is designed to involve Aboriginal women visual artists in the Arts community of Winnipeg. Artists are invited to step through the Eastern Door on Saturdays from 12-4 pm to chat about art, exchange ideas or just enjoy a cup of coffee or tea. Appointments accepted.

## The Northern Door

The Northern Door is considered the threshold to the intellectual self. Representing a place for women who share the same passions to gather and express themselves, the Northern Door is a safe environment where all can come to teach, learn and reconnect.

From October 2007 to March 2008, MAWA will be offering a six-month series of Aboriginal Art Sharing Circles to professional women artists of Aboriginal ancestry called The Northern Door. Participants will share and learn about western art theoretical concepts while examining historical, spiritual and cultural values. An Open Studio and Critical Reading environment will allow a glimpse into the soul of Aboriginal art, as artists discuss their own art through personal visions and stories.

**\*Deadline for Registration is October 6th, 2007. There will be \$40.00 Registration Fee for non-members, and a \$25.00 Fee for MAWA members.**

**For further information, registration or inquiries about financial assistance or MAWA membership, please contact Leah Fontaine, Cultural Liaison and Outreach Coordinator at (204) 989-2318 or [culturalliaison@mawa.ca](mailto:culturalliaison@mawa.ca)**

Clockwise from bottom: Robin Courchene, Isabelle Morris, Lana Winfield, Darlene McPherson, Pat Ningewance, Elvira Finnigan, Connie Bart-Hamel and Roewan Crowe participate in a traditional pipe ceremony for the AWAM program, January 2007.



## MAWA IS CREATING A MEMBERS GALLERY FOR OUR WEBSITE!

All MAWA members can participate regardless of experience. There is no cost to create or maintain your member's page. Each member's page consists of a biography, an artist's statement, and up to six representative images of the member's work. Contact information can also be included, as well as a link to your personal website, if you wish.

The Members Gallery will be a simple and direct way for other members, curators, the art community, and the general public to learn more about MAWA members. The Members Gallery will be searchable alphabetically and by region. The next time you are planning a trip, you can easily find MAWA members nearby!

To participate, please email the following:

- Biography (max. 300 words)
- Artist's Statement (max. 300 words)
- Contact information: phone number, e-mail address, web site (optional)
- City, province and country of residence
- A maximum of six images of your work (300 dpi, JPEG, TIFF)
- Please include full captions for each photo, including: Artist's name, name of the work, medium, date completed, photo credit

Please email submissions to [programs@mawa.ca](mailto:programs@mawa.ca). For further information, print and mail a signed copy of the image release form available on the MAWA website. [www.mawa.ca/membersgallery](http://www.mawa.ca/membersgallery).

### FOUNDATION MENTORSHIP PROGRAM 2007-2008

## *Congratulations to this year's new Mentees!*

**REVA STONE** will mentor Alison Pattern and Gwen Armstrong.

**SIGRID DAHLE** will mentor Kendra Ballingal and Karen Schlichting.

**LEAH DECTER** will mentor Laura Csuzdi and Caroline Barrientos.

**JAZZ DE MONTIGNY** will mentor Brook Drabot and Cindy Flynn.

#### SEPTEMBER

No First Friday this month

#### SEPTEMBER 11

#### *Fixed / Variable*

The 2006 / 07 Foundation  
Mentorship Exhibition  
**Opening 7pm**

#### OCTOBER 5

First Friday  
with **Leah Fontaine**

#### OCTOBER 6

**AWAM Northern Door** Deadline

## *Dollhouse*

Mark your calendars for  
MAWA's annual fundraiser:

### MAWA OVER THE TOP ART AUCTION and CUPCAKE PARTY

SUNDAY MARCH 16, 2008  
2-5 PM AT MAWA  
611 Main Street

*The most cupcakes you'll  
ever see under one roof!*



The Edge Artist Village and Gallery is an artist-run, non-profit organization for the arts located in the heart of Winnipeg's Downtown.

**The Edge Artist Collective** • affordable live / work spaces  
• studio memberships • gallery rentals

Studio Membership Full, Associate, & Patron memberships available  
Call Alix McLachlan at 479-7551 for more information.

[www.edgevillage.com](http://www.edgevillage.com) • [info@edgevillage.com](mailto:info@edgevillage.com)  
611 Main Street • Winnipeg • MB • R3B 1E1



**Sandra Campell**

Abilities Arts Festival will present an International group photographic exhibition titled *CONNECTIONS 3: "Exposed"* between October 25 and November 11, 2007 at the Joseph D. Carrier Gallery, 901 Lawrence Avenue, Toronto.

**Sandra Campbell's** black and white silver gelatin image *Rollin'!* was chosen for the exhibit.

Sandra Campbell, *Rollin!*  
black and white gelatin print, 2007.

**Laiwan** has created the interactive web site, *Call Numbers: The Library Recordings*, which can be found at <http://thelibraryrecordings.eciad.ca>. It was created for the exhibition *Group Search: Art in the Library*, curated by **Lorna Brown**. The web site will continue to develop with audience participation from January 20, 2007 to March 31, 2008. *Group Search* is a collaborative project of Other Sights for Artists' Projects, The Vancouver Public Library, and the City of Vancouver Public Art Program.

**Sisters of the Cross**

**Dominique Rey**

**TRUCK Gallery, October 12-November 10, 2007**

Looking into the convergence between art and spirituality and her own spiritual quest through the observation of a community of nuns, **Dominique Rey** creates an atmosphere where temporality becomes tangible. This project encourages a meditation on tranquility, the capacity to listen, and the relationship between attention, time and devotion.

Dominique Rey, *Small Chapel*, digital print, 30" x 40", 2006.



Leah Fontaine, *Water* (from *The Four Elements Series*), digital photographic, 2004.

**Show + Tell: Notions of Home and Place by University of Winnipeg Alumni**

As part of the University of Winnipeg's 40th anniversary and homecoming celebrations, this group exhibition features contemporary art in various media by 13 Canadian alumni artists presently residing in Manitoba, BC and Quebec. Participating artists include MAWA members **Richard Dyck**, **Leah Fontaine**, and **Paul Robles**. The show will be a feast for your visual AND aural senses!

The opening reception takes place Thursday, September 13, 4-6 pm and includes a performance by Glen Johnson at 5 pm. The exhibition continues until October 27 at Gallery 1C03 in The University of Winnipeg. Contact Jennifer Gibson for further information: [j.gibson@uwinnipeg.ca](mailto:j.gibson@uwinnipeg.ca) or (204) 786-9253.





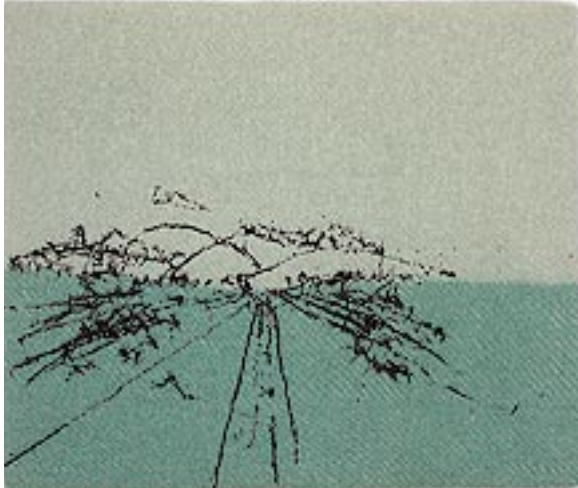
Lorri Millan. Photo by Zab, May 2006.

**Scentbar: Fragrances for Troubled Times**

Shawna Dempsey and Lorri Millan will be performing *Scentbar: Fragrances for Troubled Times* at Artcentral in Calgary, from October 3 to 6, 2007. The performance is sponsored by Em Media and Neutral Ground, Calgary.

**Scratching The Surface**

*Scratching the Surface: The Post-Prairie Landscape* will be shown at the Plug In Institute of Contemporary Art from September 7 to November 17, 2007. *Scratching the Surface* will assemble an exhibition of nineteen local (and formerly local) visual artists, including MAWA members **Sylvia Matas**, **Jean Klimack** and **Kim Ouellette**. The exhibition is curated by Steven Matijcio. The title refers to the 2005 literary anthology *Post-Prairie* (co-edited by Jon Paul Fiorentino and Robert Kroetsch), which proposes that a shift is taking place as the image of long, flat lands covered in golden wheat yields to urban sprawl, social upheaval, and surreal imagination. *Scratching the Surface* provides a multi-generational glimpse into this transition, exploring the convergence of two interests collectively (re)shaping the surface and substance of art in Winnipeg.

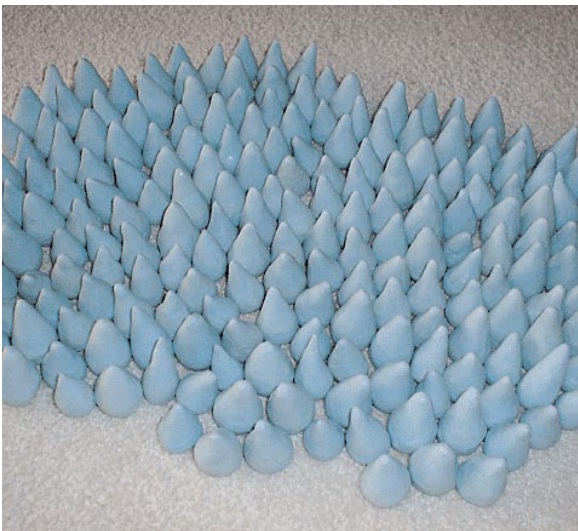


Kim Ouellette, *Backwards Prairie*.



Jean Klimack, *Think of This as a Wave*.

Sylvia Matas, *Puddle*.



**Annette Lowe** was awarded first place at the Manitoba Society of Artists 75th Annual Open Juried Competition. The jurors were Jennifer Macklem (Sackville, New Brunswick) and Jennifer Gibson (Gallery 1C03, Winnipeg).

Annette Lowe, *Untitled*, 2007.

**Meetings - Rencontres**

An exhibition entitled *Meetings- Rencontres* will take place at the Musée des Maîtres et Artisans du Québec, in Saint Laurent, Montréal, from October 24, 2007 to January 10, 2008. Curated by Denis Longchamps, it will combine the work of three ceramists from Montreal, Québec and three from Winnipeg, Manitoba. Montreal participants include Monique Giard, Laurent Craste, and Yves Louis Size. Participants from Winnipeg include MAWA member **Gaëtanne S. Sylvester**.

**Grey Matters**, a Collective of Women Artists, will be having an exhibition at Outworks Gallery, located at 290 McDermot on the third floor. The exhibition will take place on October 13th and 14th, and from the 18th to 21st. The Opening Reception will take place on October 12th, with MAWA members in attendance.

Gaëtanne S. Sylvester, *Au Beau Milieu*, earthenware, handbuilt, stained, glazed, 2006.



## UPCOMING GRANT DEADLINES

### WINNIPEG ARTS COUNCIL

#### Professional Development Grant Program

Applications will be received throughout the year at least one month prior to the activity to be undertaken.

### MANITOBA ARTS COUNCIL

#### October 1

Film Grants — Script Development, Project and Production  
Video Grant — Script Development, Project and Production  
Touring Grant for Individuals/Small Ensembles — Dance,  
Music and Theatre

Touring Directory

Artists in the Schools Directory (For artists)

Community Connections and Access Grants

Artist in Community Residency Grants

#### November 30

Aboriginal Arts Mentorship Training & Development

Aboriginal Arts Creative Development

### CANADA COUNCIL FOR THE ARTS

#### September 15

#### Aboriginal Traditional Art Forms Program

This program supports Aboriginal artists (working individually or together) to undertake activities that contribute to the knowledge, sharing, understanding and development of Aboriginal traditional art forms. Such activities include research, as well as preservation, creation, production and dissemination (sharing the knowledge) of Aboriginal peoples' traditional visual art forms. This program has three components, and they support the following activities: Research Grants, Creation/Production Grants, and Dissemination Grants. All three components support a desire to create, preserve or disseminate knowledge and understanding of Aboriginal traditional visual arts forms, including: basketry, appliqué, beadwork, birchbark biting, quillwork, button blankets, Salish and Raven's Tail weaving, Aboriginal pottery/clay techniques, wood-carving, and stone- and bone-carving. This may not be a complete list, and others will be considered equally.

**For further details or to obtain an application form:**

**Jim Logan**

**Visual Arts Section Officer**

**Canada Council for the Arts**

**350 Albert Street, P.O. Box 1047**

**Ottawa ON K1P 5V8**

**Tel: 1-800-263-5588 (toll-free) or (613) 566-4414, ext. 5266**

**Fax: (613) 566-4332**

#### October 1

**Travel Grants** to professional artists in visual arts including artists in photography, fine craft and architecture, and independent critics and curators.

#### December 1

#### Assistance to Visual Artists: Project Grants

Project Grants provide support for research/creation, professional development, production, networking and career development activities for professional artists making an important contribution to contemporary visual arts.

The project must be significant and advance the long-term artistic and/or career development of the applicant at a key moment of their career. There are three types of project grants: Research/Creation, Production, Career Development.

**To apply for a grant:**

**[www.canadacouncil.ca/grants/visualarts](http://www.canadacouncil.ca/grants/visualarts)**

**Michel Gaboury or Pao Quang Yeh**

**Visual Arts Section Officer**

**Canada Council for the Arts**

**350 Albert Street, P.O. Box 1047**

**Ottawa ON K1P 5V8**

**Tél: 1-800-263-5588 (toll-free) or 613-566-4414 ext. 5265 or 5094**

### NSI FEATURES FIRST

#### September 28

NSI Features First is an ambitious three-phase training program, designed to emphasize the professional development of emerging filmmakers working on their first or second feature. Up to five Canadian writer/producer/director teams are selected based on the strength of their film concepts, the potential development and packaging of their film projects, and their suitability to the program. The program begins with intensive training: a combination of group training, team-specific development and individual sessions.

The curriculum includes script and story development, market research, legal requirements, pitching, financing, distribution and marketing and sales training—delivered by leaders in the Canadian film industry.

As teams advance through the program, training focuses on the specific needs of the individual projects. Teams reaching the final phase create marketing materials and pitch packages to take to the marketplace. Graduates are invited to screen their completed films at NSI FilmExchange Canadian Film Festival. **Register at:**

**<http://www.nsi-canada.ca/featuresfirst/registration.shtml>**

### VIDEO POOL FUNDING DEADLINES

#### October 1 Wendy Geller Fund

The Wendy Geller Fund provides financing for artist projects that are between funding deadlines. In memory of Wendy and in dedication to her commitment to the artistic community, the Geller family generously established this fund with up to \$250 of cash.

#### November 1 New Artist in New Media Fund

The New Artist in New Media Fund is a production and professional development fund for emerging artists in all avenues of new media: documentary, audio, installation, video art, narrative, animation, etc.. Five recipients will be selected. This fund includes: a full Annual Access Membership at Video Pool valued at \$500, \$400 tape stock / materials, 20 hours with a mentor, 30 "flex" credits to use for workshops, and one-on-one instruction or tech assistance.

#### Media Production Fund

The Media Production Fund is a production fund for artists which includes a professional development component. Four recipients will be selected each year. This fund includes: a full Annual Access Membership at Video Pool valued at \$500, \$400 tape stock/materials, 20 "flex" credits to use for workshops, one-on-one instruction or tech assistance.

### Art Gallery of Southwestern Manitoba

#### Ongoing Call for Submissions

To exhibit in the Main Gallery or the Community Gallery, submit proposals including: curriculum vitae, artist's statement, minimum of twenty slides and/or video documentation, support material –catalogues, articles, publications, etc..

#### Send proposals to:

Curator of Contemporary and Aboriginal Art  
Art Gallery of Southwestern Manitoba  
710 Rosser Avenue, Unit 2, Brandon, Manitoba R7A 0K9

### Sculpturespacific

#### Ongoing Call for Submissions

*Sculpturespacific* is a new publication that will serve the arts and sculpture community from British Columbia to Manitoba and Oregon to Alaska. The editorial department is soliciting articles on sculpture and sculpture making. The three possible submissions are feature article, forum article, or review article. **Call:** 250-768-0633

### FUSE Magazine

#### Ongoing Call for Submissions

*FUSE* is interested in writing that examines artworks and cultural events in terms of the relationship between political issues and contemporary culture. Articles to be considered for publication should provide a critical context for the work or event being addressed. Ideally, they should also provide some evaluation of the ways in which these works or events might encourage or facilitate social change. **www.fusemagazine.org/write.html**

### Her Circle Ezine

#### Ongoing Call for Submissions

*Her Circle Ezine* is an online literary and arts journal dedicated to exploring the feminine experience in the world community. Through intelligent works of writing, art, and photography, women around the globe share with us what it means to be a woman and artist in society. Themes addressed should include identity, gender, ethnicity, culture, and status. **http://www.hercircleezine.com/**

### Symposium:

#### Witness: A Symposium on the Woodland School

The Art Gallery of Sudbury is pleased to announce *The Drawings and Paintings of Daphne Odjig: A Retrospective Exhibition*. The exhibition is scheduled to open on September 15th, 2007 and run until November 11th, 2007. With more than sixty paintings and drawings executed over the past forty years, this exhibition represents the first major survey of Odjig's work since 1985. An illustrated catalogue with essays by First Nations artists Robert Houle, Duke Redbird and Bonnie Devine will accompany the exhibition.

In support of the exhibition, a symposium of Aboriginal curators, artists, critics, historians and scholars, entitled "Witness," will commence with the formal opening reception on Thursday, October 11, 2007. The symposium continues October 12, 13, 14. With 40 years of Daphne Odjig's paintings as backdrop and inspiration, this series of lectures and discussions will provide a unique forum within which to address critical issues in contemporary First Nations Art.

#### Inquires directed to:

odjigproject@artsudbury.org  
Art Gallery of Sudbury  
251 John Street, Sudbury, ON P3E 1P9  
Tel: (705) 675-4671 or Fax: (705) 674-3065

### Membership Campaign

#### The Manitoba Craft Council

The Manitoba Craft Council interim board wishes to announce the launch of a province-wide membership campaign. MCC provides a variety of services to professional and aspiring crafts people in Manitoba, including workshops and exhibits. MCC connects members with other members, suppliers, exhibit opportunities, commissions, awards, exposure on the web, and to national and international crafts organizations. The AGM is planned for September 23, 2007.

**To renew or apply for membership, fill out application form: [www.manitobacrafts.ca](http://www.manitobacrafts.ca).**

THANKS TO ALL THOSE WHO  
HAVE DONATED TO MAWA  
SINCE MAY 2007

JUDITH PUTTER  
PATRICIA BOVEY  
AMY KARLINSKY  
LIZ GARLICKI  
PAULINE BRAUN

**Thinking of Buying or Selling?**  
Call Chris Krawchenko,  
your 'Alternative' Realtor!  
777-9999  
**MAXIMUM**  
Realty Ltd.  
adj. "The Greatest Possible"  
Serving Winnipeg's alternative and arts  
communities for over 17 years.

# MAWA RECEPTION HONOURS AGANETHA DYCK



Amy Jeanne Mitchell, Aganetha Dyck and Reva Stone at MAWA.

Aganetha Dyck is the recipient of two major awards this year: The Governor General's Award in Visual and Media Arts and Manitoba Arts Council's Arts Award of Distinction. A reception to honour Aganetha Dyck was held at MAWA on May 30, 2007.

In addition to her recognized excellence in the visual arts, Aganetha has played a vital part in the growth and advancement of the arts community in Manitoba. Aganetha currently sits on the Board of Directors at Plug In Gallery and she has devoted over twenty years as a mentor at MAWA. According to artist **Shirley Brown**, "Aganetha is inspirational. Through hard work, perseverance and brilliant creativity, she has become an international artist. Knowing her has allowed me as well as many others to attempt this road. Her free-thinking lets us know that, artistically, we can do anything we want."

In addition to her formal mentoring, she has informally mentored many of us. We are a significantly stronger and better community because of Aganetha Dyck's involvement. The event was well attended by former mentees of Aganetha's, members of the Winnipeg cultural community, as well as friends and family.

### Thanks to the following businesses who donated to the event!

High Tea Bakery  
Safeway at River and Osborne  
Morden Nurseries

***Congratulations  
Aganetha!***

*Welcome*



**Carolynn Smallwood** comes to MAWA after working in the local publishing industry for several years: she was employed at Arbeiter Ring Publishing as the Office Manager from May 2003-May 2007. Previous to her position at Arbeiter Ring, she spent several years as a bookseller after completing her Master's degree. She holds a M.A. in English Literature from the University of Victoria (1996). Her Master's thesis employed feminist film theory to analyze the male and female gaze in Victorian novels. From 2003 to 2006, she was a contract instructor at the University of Winnipeg, where she taught several first-year English Literature courses, such as "Ethics in Literature" and "Representations of 'Mental Illness' in English Literature." As MAWA's new Office Administrator, she is honoured to have the opportunity to adapt her skills and qualifications in assisting with MAWA's mission of supporting women artists.

**mawwa**  
MENTORING ARTISTS *For* WOMEN'S ART

611 Main Street, Winnipeg, Manitoba, Canada R3B 1E1  
(204) 949-9490 info@mawa.ca http://www.mawa.ca

### *Current Board of Directors*

Patricia Bovey, Shirley Brown, Rhian Brynjolson, Louise Duguay, Elvira Finnigan, Liz Garlicki, Amy Karlinsky, Dana Kletke, Garland Lam, Annette Lowe, Claudine Majzels, Holly Procktor, Catherine Toews, Diane Whitehouse

### STAFF

Vera Lemecha, Executive Director: vlemecha@mawa.ca p. 942-8994  
Carolynn Smallwood, Office Administrator: info@mawa.ca p. 949-9490  
Leah Fontaine, Cultural Liaison and Outreach Coordinator:  
culturaliaison@mawa.ca p. 989-2318

DESIGN Susan Chafe

MAWA and its projects are generously funded by Manitoba Arts Council, Canada Council for the Arts, Canadian Heritage, The WH & SE Loewen Foundation, Winnipeg Arts Council, The Winnipeg Foundation, The Thomas Sill Foundation, Assiniboine Credit Union, donors and members.

