

artist residencies



Artist Lucy Pavez (right) sharing her work with Tough Love guest critic Sandee Moore, April 2022

In the summer of 2010, MAWA hosted its first artist in residence, Erika DeFreitas from Toronto. While she was in Winnipeg, we hired her to give an artist talk and conduct studio visits. Soon, she began collaborating on projects with local artists. The residency was an opportunity for DeFreitas to make work, research, reflect and forge professional contacts. At the same time, it provided new energy, points of view and experiences to the local art community.

MAWA has since welcomed scores of artists to our loft apartment, located upstairs at 611 Main Street. These guests have exposed us to exciting ideas and brought fresh inspiration; they have become colleagues and friends.

The pandemic put this vital program on pause, but we are happy to report that it is back. This summer, MAWA welcomes artists Tomoko Inagaki (Japan), Tara Lynn MacDougall (Montreal) and Estelle Chaigne (France). See page 3 for details! In the fall, we will be joined by Suryara Bernardi (Brazil) and Ebba Bohlin (Sweden), and local artist Tracy Peters will head to Stockholm as part of a MAWA residency exchange program.

We can think of no better way to celebrate the end of a long pandemic than by connecting with other humans! Especially now in this time of war and strife, it is incumbent upon us all to be aware of international issues. Through cross-cultural understanding, we attempt to forge a more peace-filled world.

– Shawna Dempsey and Dana Kletke

inside

- 2 First Friday Lectures
- 3 Artist Talks
- 4 Exhibitions
- 5 Outdoor Art & Donors

- 6 Residencies
- 7 MAWA News
- 8 What You May Have Missed
- 10 Critical Writing

- 11 Workshop
- 12 Heads Up Calendar

All are welcome to attend these free noon-hour lectures on art, art theory and criticism.

ALL ARE WELCOME to attend these free noon-hour lectures on art, art theory and criticism. Come to MAWA to see the lectures in person, or watch live online on Zoom (watch your "Coming Up at MAWA" emails for a link) and ask questions through the comment function. Online broadcasts will feature ASL translation. Within a couple of weeks, the First Friday Lectures will be available with captioning and ASL at mawa.ca/videos/lectures.



Mindimooyenh: Indigenous Women Warrior-Artists

BY SUZANNE MCLEOD

Friday | June 3, 2022 | 12 - 1 pm | online and at MAWA

Indigenous women have been and are the backbone of community and the voice of celebration, pride, injustice and controversy. Through the lens of creation, storytelling and performance, McLeod will speak about First Nations women warrior-artists who told—and tell—the stories of Indigenous experience and resilience.

Suzanne McLeod is Anishinaabe-ikwe from Sagkeeng First Nation, Manitoba. She obtained her PhD in Art History (Native American) from the University of New Mexico and is currently Assistant Professor at the School of Art, University of Manitoba (Indigenous Arts). Her interest is in the re-examination of constructed narratives of Indigenous peoples.

Sherry Farrell Racette,
*Ancestral Women
Taking Back Their Dresses*,
gouache and watercolour
on paper, 1990
(collection of the
Saskatchewan Arts
Board, Regina)



COMING UP IN SEPTEMBER!

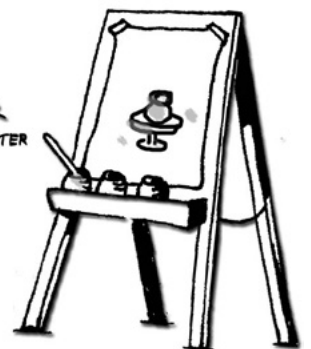
First Friday Lecture by Riva Symko,
Goal Setting workshop with Allison Moore,
Orange Shirt Day beaded pins taught
by Dakota Nadeau, and much more!

THE EDGE

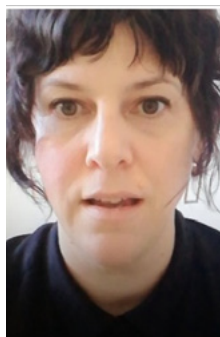
AN URBAN ART CENTER
ALSO HOME TO THE CREATIVE CLAY CENTER

Affordable venue rental rates
www.edgevillage.com
611 Main Street R3B 1E1

Studio - 947-2992
Clay Center - 880-0771



MAWA'S ARTIST IN RESIDENCE PROGRAM HAS RESUMED, after a pandemic-related hiatus, and is welcoming artists from around the world. Each guest will be in residence in MAWA's apartment for a calendar month and will present a free, in-person talk about their work, open to everyone. Come learn about national and international art issues, practices and communities. Want to help host an artist? Contact Adriana at programs@mawa.ca if you are interested in being one of our Winnipeg art ambassadors. An honourarium is paid for this role.



Tara Lynn MacDougall

ARTIST TALK

Wednesday | June 15, 2022 | 6:30 - 7:30 | at MAWA

Tara Lynn MacDougall is an interdisciplinary artist based in Tiohtià:ke/Montreal, Quebec. Her interest lies in a critical and humorous re-evaluation of the art historical canon, and reconsideration of distinctions between

standard labour and artistic production. While at MAWA, she will be working on several textile pieces (rug hooking) and compiling images for a painting/mixed media project. This new work will interrogate method and material, and ultimately deal with themes of class, gender, value, labour and hierarchy.



Tara Lynn MacDougall, *it's worth repeating (so I did)* (installation view), 2018. Photo by Angeline Simon



Tomoko Inagaki

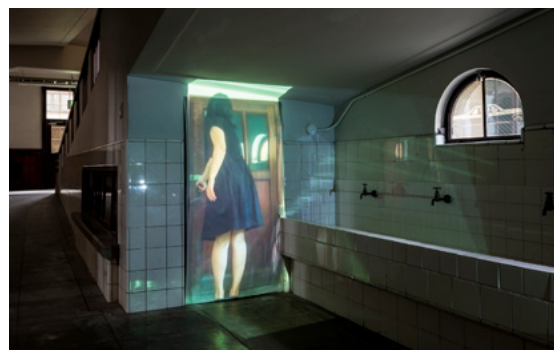
ARTIST TALK

Wednesday | July 13, 2022 | 6:30 - 7:30 | at MAWA

Tomoko Inagaki lives and works in Osaka and Kobe, Japan. Her work explores gendered experiences of life, death, nature and artificiality through installation, video, photography and performance. While in Winnipeg she will

continue her annual *Doors* project, a video performance of opening and entering that has been ongoing since 2013. She will also work on a new pandemic-related video work, *Protective Screen*.

tomokoinagaki.com



Tomoko Inagaki, *Doors*, video, ongoing project, 2013-present



Estelle Chaigne

ARTIST TALK/PERFORMANCE/SCREENING

Wednesday | Aug 10, 2022 | 6:30 - 7:30 | at MAWA

Presented in partnership with
Institut Français + Rennes Métropole

Estelle Chaigne is a photographer, working with all kinds of images, who is based in Rennes, Brittany, France.

She explores the layers of an image “to wander in the thickness of photography” its meaning and time. While in Winnipeg, she will combine analogue photographic work and performance to explore issues of perception, the invisible, mental images, gesture, the consciousness of seeing, chance and accident.

Estelle Chaigne, *Mediums*, temporary tattoo on skin, digital photography, 2019





Visitors enjoying MAWA's members' showcase, *Micro*, April 2022

Loose Ends

June 3 - 23, 2022 | at MAWA

Opening: Friday | June 3 | 6 - 8 pm

Exhibition: Wednesday - Friday | 12 - 5 pm

All welcome

Loose Ends is the Foundation Mentorship Program graduate showcase, featuring the work of Jean Borbridge, Tricia E. Brock, Francesca Carella Arfinengo, Christina Hajjar, marie-france hollier, Anastasia Pindera and Julia Wake.

Unfinished business. Lost memories. Scraps. Leftovers. How do loose ends speak in our practices? How do we translate remnants into form? In this group exhibition, the 2020-2021 MAWA mentees grapple with the ephemerality and materiality of their personal and collective archives. Through installation, fibre art, jewelry and lens-based work, this exhibition interrogates the embedded history in materials and objects. Traces are preserved, reworked or incorporated by the artists as a means of processing or making visible the loose ends that drive their practices.



Photo by
Tricia E. Brock

From Within

BY THE MÎCÊT TIPISKÂWI-PÎSIMAK COLLECTIVE

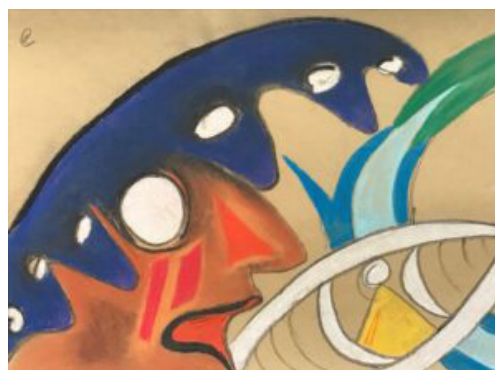
Online: May - June, 2022

at artgallery.manitobaartsnetwork.ca

In person: August 25 - October 15, 2022

at AGSM Community Gallery, Brandon
with a September 22, 2022 reception (agsm.ca for details)

From Within is an exhibition of works by artists Frances Cooper (metis), Annie Courchene (Anishinaabe), Tess Ray Houston (Cree) and Kristy Janvier (Dene), whose artwork reflects the Land as a foundational base within their own creative processes. Indigenous perspectives are reflected through dance, beadwork, photography and assemblages. This work has emerged from the Indigenous Rural Arts Mentorship Program, provided by MAWA and the Manitoba Arts Network, under the mentorship of artist and educator Lita Fontaine, whose artwork is also featured.



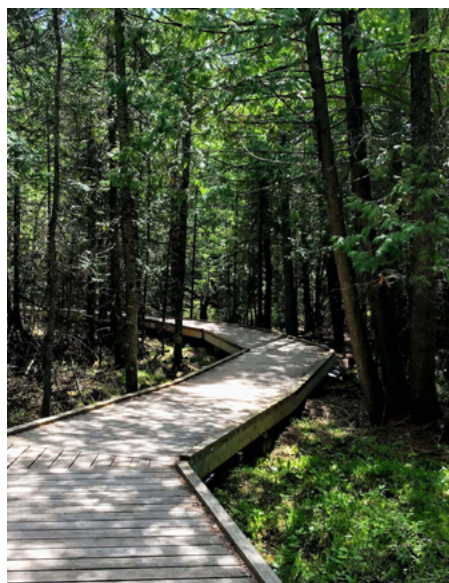
Frances Cooper,
Upon Waking,
chalk pastel on
toned paper,
2022

Artist Mothers at MAWA Summer plein air drawing

DATES AND LOCATIONS TBA

Meetings are relaxed and informal, and participants share concerns, ideas, inspiration, strategies and support for those who juggle the tricky demands of artmaking and mothering. This summer, we will be drawing together, out of doors. Email group leader Loriccia at artistmothers@mawa.ca for location details.

Note that these will be the final meetings of this group, which has operated under the leadership of Brenna George, Sandra Brown and Loriccia Pacholko for 12 years. Thank you to these generous group leaders. Artist Mothers participants, we look forward to seeing you at other MAWA programs!



Angela Beer,
Take a Breath,
acrylic on canvas,
2021

Field trip to Brokenhead Wetland Interpretive Trail

WITH TAYLOR GAVIN AND PEGGY BAINARD ACHESON

Saturday | June 18, 2022 | Leaving MAWA at 12:30 pm or
meeting at Brokenhead at 1:45 pm | Free! All welcome

Explore the 2.6 km trails of this ecosystem, guided by Taylor Gavin of Brokenhead First Nation and Peggy Bainard Acheson of the Manitoba Orchid Society. The wetland contains traditional medicinal plants, orchids and carnivorous plants, including 23 provincially rare species. There will be a tour, followed by some time for independent drawing, painting or writing.

Please bring your own snacks, drinks and art supplies. No dogs, please. Washrooms are available. Sunscreen and hats are recommended. The trails are wheelchair accessible.

Folks are invited to travel to Brokenhead in their own cars. If public health allows, we will also rent a wheelchair accessible bus to depart from MAWA. If you would like to register for the bus, contact Adriana at programs@mawa.ca and put "Brokenhead" in the subject header. Spaces will be limited. Please, if you register and cannot attend, we need to know several days in advance so that someone on the waiting list can be advised. We estimate that the bus will arrive back at MAWA around 6 pm.

For more information about the wetlands, see manitobatrailproject.ca/trail-list/brokenhead-wetland-interpretive-trail.

thank you to our recent donors:

Anonymous
John Anderson
Jessica Bernert
Rhian Brynjolson
Jocelyn Chorney
Catherine Collins

Miriam Cooley
Maryam Decter
Julie Delorme
Lois Friesen
Kylea Fulton
Kelly Johannsen
Dana Kletke

Clare Lawlor in memory
of Lillian Firner
Kylie MacRae
Raisa Maxwell
Laurie McDougall
Tania Nault
Bev Peters

Mary Reid in memory
of Patti Jensen
Mary Reid in memory
of Gail Nep
Mary Scott
Charlotte Sigurdson

Kathleen Sorobey
Reva Stone
Diane Whitehouse
Iris Yudai
Winnipeg Foundation
Staff, from their
Jeans Day

National and International Artists in Residence at MAWA

Application deadline: **Friday, August 5, 2022, at 4 pm**
For residencies in **spring, summer** and **fall 2023**

MAWA is offering our urban, loft-style apartment to women, non-binary, trans and 2-Spirit women-identifying visual artists for residencies of 2-4 weeks in duration. Applicants can use the space and time for research, reflection, networking and/or production. Accommodation is provided for free.

The MAWA apartment is approximately 700 sq. ft. or 65 sq. m. with four large openable windows, air conditioning, adjustable blinds and a smart TV. The MAWA apartment is fully furnished and includes a kitchen, a dining area, a bathroom with shower, a queen-size bed, a double futon/couch and a designated parking space. All bedding, towels and cooking utensils are provided. The apartment is located on the second floor of 611 Main Street in downtown Winnipeg and is not wheelchair accessible. Pets and smoking are not allowed in the apartment. Artists' family members are welcome.

MAWA's apartment is a clean space that is not conducive to painting and many forms of sculpture. However, we can introduce you to other Winnipeg art centres that may be able to help you gain access to the facilities you need.

While at MAWA, you will be expected to present your work to our members in a form of your choice (screening, talk, performance, showcase of work-in-progress, etc.). MAWA will pay you a \$335 fee for this presentation.

MAWA can provide a letter of invitation to successful applicants but is unable to provide or help artists secure travel and/or production funding.

Artists at all stages of their career are encouraged to apply. Equal consideration will be given to emerging and established artists. The MAWA residency program is intended to provide an oasis in which artists can do whatever they need to do in order to move their practice forward.

Applications must be emailed to programs@mawa.ca with the subject heading "residency 2023" and should consist of a single PDF containing the following elements:

- a cover letter saying why you would like time in the MAWA apartment and what you will be working on (goals, rationale)
- first and second choice of preferred dates (including start and end dates) between May 1 and October 30, 2023
- an artist's CV
- up to 20 embedded images or links to up to 2 videos no longer than 4 minutes in total

If you have any questions, contact Adriana at 204-949-9490 or programs@mawa.ca.



Rural Artist Urban Retreat at MAWA

Application deadline: anytime, for residencies in **Nov-Dec 2022** and **Jan-April 2023**

Are you a woman, non-binary, trans or 2-Spirit woman-identifying visual artist living in rural Manitoba, Saskatchewan or Northwestern Ontario, who would benefit from a trip to Winnipeg to see an exhibition, attend a lecture or take part in a workshop? Need to do research or buy art supplies? If so, MAWA welcomes your application to our Urban Retreat, in our loft-style apartment at 611 Main Street in downtown Winnipeg **FREE OF CHARGE** for stays of three nights to two weeks.

For a description of the apartment, please see above. Because there are two beds separated by a curtain, consider making the trip with an art buddy. Free parking is included, just steps from the apartment. The only requirement is that you become a MAWA member: mawa.ca/membership.

To apply, please send a letter to programs@mawa.ca explaining why you would like to stay at MAWA. Requests will be accommodated based on availability. Artists at all stages of their career are encouraged to apply. We welcome rural artists and want to support your practices, so don't be shy! Come and stay with us!



Artist Tracy Fehr with her work *Monuments*, textiles, acrylic and rabbit fur on metal stretchers, 22" x 6", 2022, on the Tiny Gallery wall, March 2022

Tiny Gallery: MAWA Members' Wall

The 45"-wide "bump" on the north wall of our program space is dedicated to featuring work by MAWA members in any 2D or 3D media. Interested in showcasing your work? Contact Shawna at dempsey@mawa.ca.

Coming up in the Tiny Gallery:

July	Sarah Paradis (video)
September	Francine Martin (collage/assemblage)

Accessibility

If you have accessibility needs for any program, please let us know! Contact Adriana at programs@mawa.ca and let us know what you need in order to participate. Are finances a barrier? MAWA offers need-based bursaries. If you cannot pay the full cost of any MAWA program, contact Dana at dkletke@mawa.ca. Full or partial financial support is granted confidentially on a case-by-case basis.

Summer Hours

Between July 6 and August 26, MAWA staff won't be keeping regular office hours. We'll be at the beach! (Sometimes...) We suggest that you phone before dropping by or, better yet, make an appointment. Flexible hours will allow us to plan for the flurry of activities in the fall. That said, the MAWA staff is still here for you. If you have any questions, concerns or ideas, please call us.

Mentors on the Fly

MAWA maintains a list of recommended mentors you can contact for studio visits, crits, help with grant applications, grad school applications and other professional advice for a fee of \$40/hour. Check out the current roster at: mawa.ca/mentorship/mentors-on-the-fly.

Do you have expertise that you are willing to share? To apply to be a Mentor on the Fly, contact Shawna at dempsey@mawa.ca with your CV and a 100-word bio outlining your skills.

SUBSCRIBE NOW!

You'll be inspired by the artists and activists featured in each issue of *Herizons*.

Subscribe to *Herizons*, proudly made in Manitoba!

ORDER ONLINE \$28.50
WWW.HERIZONS.CA



Thinking of buying
or selling?
Call Chris Krawchenko
your 'Alternative Realtor'

**MAXIMUM
REALTY**

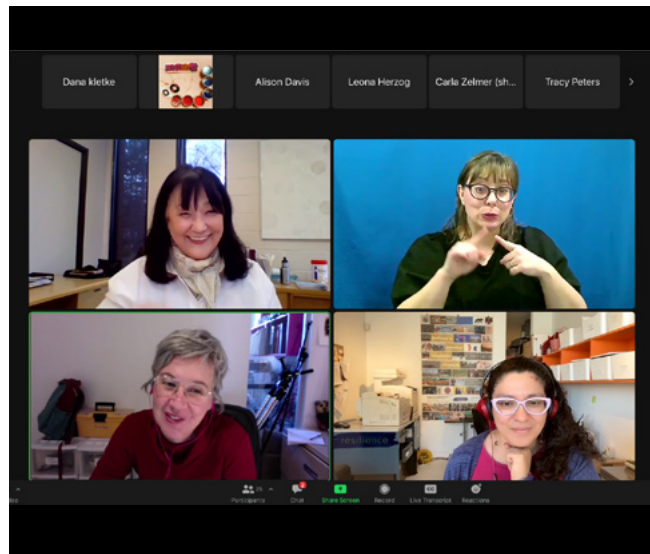
serving Winnipeg's alternative and
arts communities for over 17 years



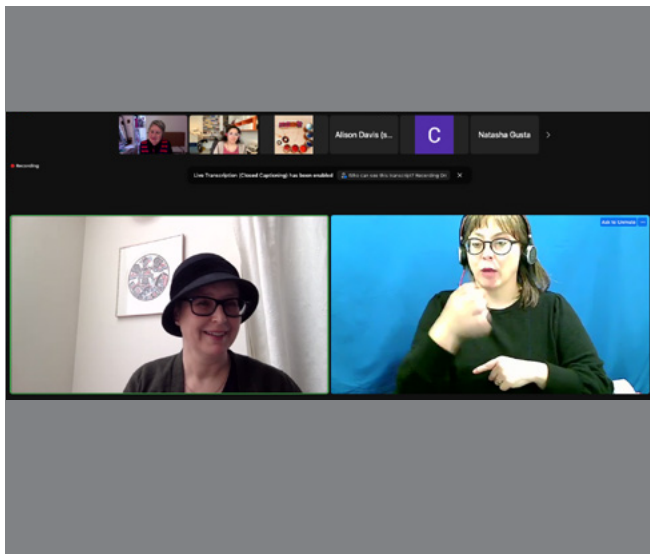
204-777-9999



Focussed Mentorship for Deaf, hard of hearing and hearing artists, led by Bramwell Enan (second from left), April 2022



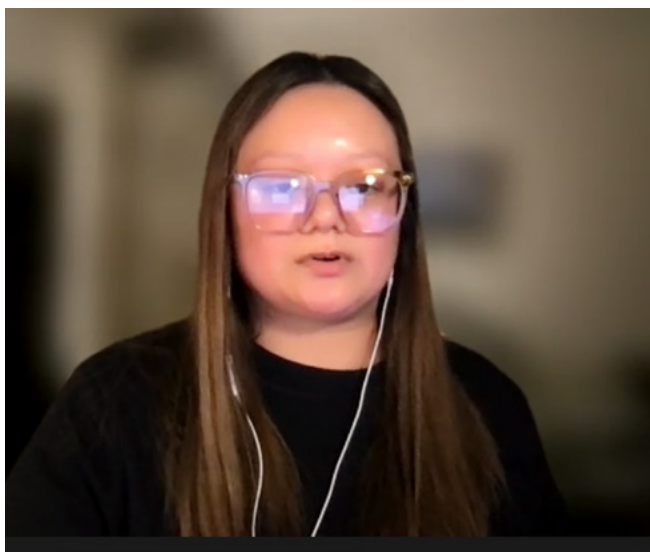
MAWA staff welcomes First Friday lecturer Shirley Madill (upper left) before her lecture *Conversing with the Land*, April 2022



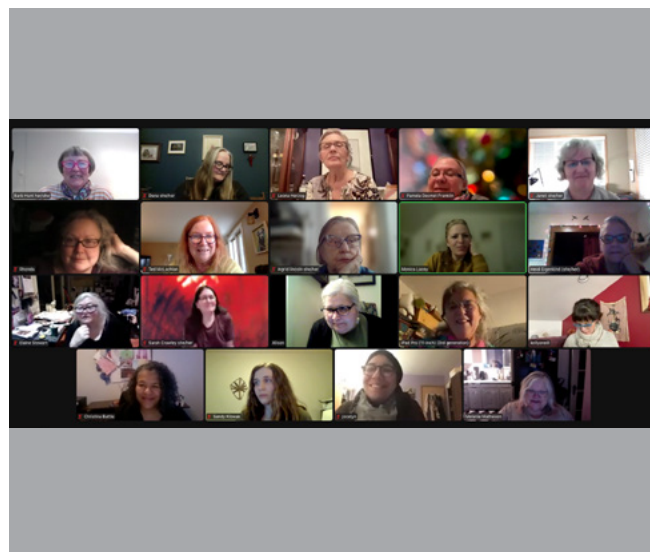
Tanya Harnett (left) delivering her First Friday Lecture *Lebret Residential School Petroglyphs*, March 2022



Jessie Jannuska (left) leading an Indigenous Art Night workshop in Sweet Grass Basket Weaving, March 2022



Leslie Supnet leading the Artist Boot Camp *How to Become an Arts Juror (and What They Do)*, February 2022



Final meeting of the 7-part lecture and discussion course *Thinking Through Thread* led by Barb Hunt (top left), March 2022

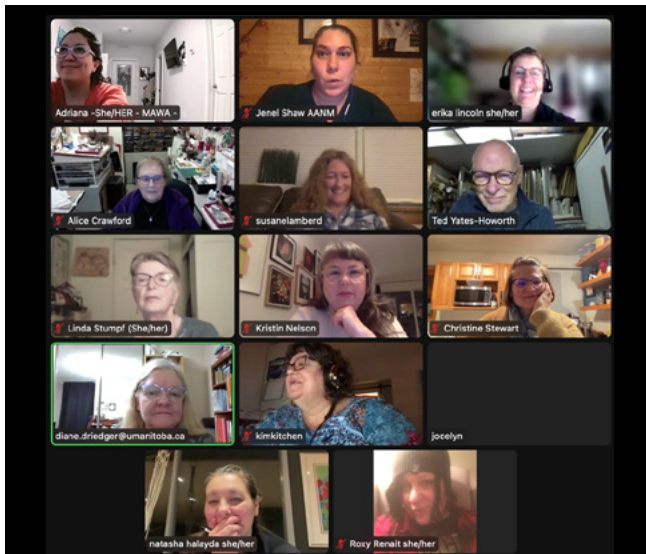
what you may have missed



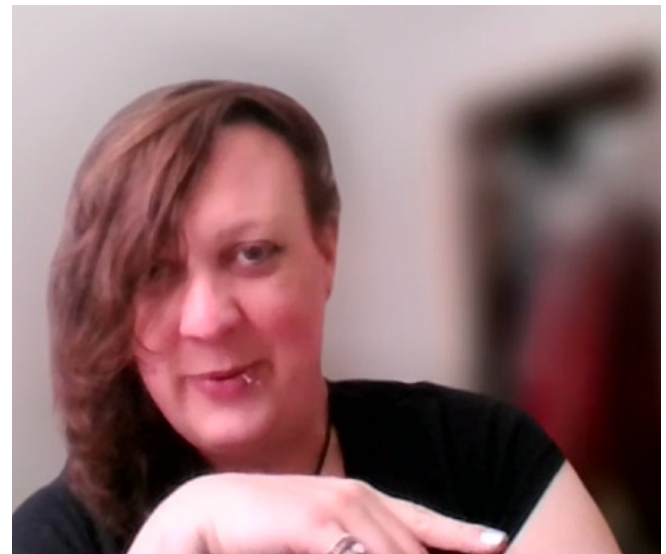
Holli Sayies, guest beader at the Cross-Cultural Beading Circle, April 2022



Critical Painting Perspectives critical discussion group led by Laura Lewis (top centre), February 2022



Erika Lincoln (top right) and Jenel Shaw (top centre) leading a Theory at Home critical discussion in *Disability Arts*, March 2022



Critical discussion in *Photography as Transgression*, led by Roxy Renait, April 2022



Adrienne Huard, guest critic at Tough Love, February 2022



Beads & Stone, a collaborative beading project with the University of Manitoba School of Art, led by guest artist Vanessa Hyggen, April 2022



Considering Copyright as an Artist

BY CHANELLE LAJOIE

Intellectual property policy is an issue in many aspects of daily life, including artmaking. The topic remains one of the most puzzling, obscure and misinterpreted subjects, and is as disputed as

it is pervasive. It represents an elaborate network of laws, policies and values that administer the dissemination of thoughts, expressions, innovations, and imagination. Every artist, and every person who interacts with art whether knowingly or not, will find themselves intersecting with the intricacies of intellectual property law one way or another. As an artist who is completing my first year of law school, my aim here is to provide broad considerations for artists as they display and/or use or reuse expressions, innovations and creations, whether their own or others', with regard to intellectual property.

The three key elements to intellectual property include patent, copyright and trademark, with a fourth element, trade secret, in development. Patents pertain to devices and processes, not words, texts or phrases. Copyright is about the distribution of creative and informative work. Trademark law allows a company to protect and appreciate its "goodwill" in the marketplace. A trademark points to an explicit signifier, such as a logo, design, colour, smell, sound or shape.

The aspect of intellectual property law that is most pervasive and has the greatest impact on art makers is the most omnipresent cultural regulatory system in the world: copyright. If you write emails to colleagues, post photos to Meta and reels to Instagram, YouTube or TikTok, you are a copyright holder. If you sing "Super Duty Tough Work" at Agit while wearing a naturally-dyed garment by Francesca Carella Arfinengo, read *Red Rising Magazine* to your kiddo while adorned in Tony Chestnut, or re-post Mahlet Cuff's "Mutual Aid Mondays" via your social media accounts after also posting your brunch from Clementine, you are a copyright user.

At its simplest, copyright is the exclusive right to copy. But of course, nothing is simple. Some works are eligible for copyright protection. Some are not. An artist's work is eligible for copyright protection if it contains markers of creative decision-making and is therefore original. Over time, creations enter the public domain, where they become part of the collection of works that exist beyond the reach of copyright ownership and serve as a cultural commons for all people to use and reuse without threat of intellectual theft.

Best practices recognized in artistic communities and accepted by courts make clear the norms and expectations which allow for reasonable use of copyright material, making reuse fair. Consider documentary filmmakers who unintentionally capture everyday copyright works ranging from images, television, texts and music in their work's background. A degree of reuse is necessary to authorize and reassure filmmakers in stepping fearlessly into their medium.

In the United States, this is called fair use, a tradition not performed in Canada. Instead, Canada uses the fair dealing approach. Fair dealing fulfills obligations similar to those of fair use. It protects the use of copyright material in the public interest. The main difference between the two is that fair dealing offers greater confidence to those utilizing it, but far less flexibility as cultural practices and technologies change.

Perhaps the least understood feature of copyright concerns what it does and does not protect. Copyright protects explicit expressions, but does not protect the facts or ideas that are conveyed by the expression. Therefore, one cannot claim copyright over themes, facts or statistics. This allows different authors and artists to express the same ideas in their own way and style. It creates a web of expressions around a particular arrangement of concepts. If copyright protected facts and ideas, then we would have far fewer nuanced expressions, and public debate would be less accessible.

Are the benefits of the copyright system justly distributed for all artists, or do the wealthy and powerful continue to dominate in garnering recognition for creation at the expense of other creators?

Artists and their creations are intimately linked with intellectual property and the workings of copyright law. I am eager to gain a deeper understanding of this area and the ways it serves my creative community. I will leave you with the following questions that I hope to explore further throughout my years as a law student and artist: How did copyright get this way? Is the current system the best possible system for the vast array of creative practices? And are the benefits of the copyright system justly distributed for all artists, or do the wealthy and powerful continue to dominate in garnering recognition for creation at the expense of other creators?

Chanelle Lajoie is a Queer Métis multi-disciplinary artist from Treaty 1 Territory. They are currently a guest on Kanien'kehà:ka Territory, balancing a law degree with virtual creative mentorships, and prioritizing being a present sibling/partner/daughter/friend to their communities back home.



Shawna Dempsey (right) and participants exploring the role of collaboration in mentorships, September 2021

Essentials of Mentorship

WITH SHAWNA DEMPSEY AND ADRIANA ALARCÓN

Saturday | Sept 10, 2022 | 1 - 4 pm | at MAWA

\$50 | Registration and payment deadline: Friday, Sept 9 at 4 pm

mawa.ca/events/essentials-of-mentorship-workshop or by phone at 204-949-9490

This participatory workshop will explore the dynamic of the mentor/mentee relationship. Topics will include defining structure, boundaries and expectations and negotiating conflict. The workshop will also explore learning models and will offer a variety of approaches and practical advice. It is an informative how-to for anyone considering setting up a mentorship program, anyone who will be mentoring, or anyone who works in peer-based arts education. It is based on MAWA's 38-year experience as a pioneer in the field of arts mentorship.

MAWA Co-ED Shawna Dempsey has mentored for MAWA, Video Pool and Crossing Communities. She has also taught mentoring workshops for Visual Arts Ontario, Visual Arts Nova Scotia and CARFAC Saskatchewan, among others. MAWA Program and Outreach Coordinator Adriana Alarcón has led MAWA's Foundation Mentorship Program for 5 years and has lectured about mentorship nationally.



611 Main Street, Winnipeg, MB R3B 1E1
204.949.9490 | info@mawa.ca | mawa.ca
office hours | Wed - Fri | 10 am - 4 pm
due to COVID restrictions, hours may vary

BOARD OF DIRECTORS

Tiff Bartel
Grace Braniff (Student Rep)
Tricia E. Brock
Christine Brouzes
Wallis Cheung
Cori Jaye Ettienne
Leona Herzog (Chair)
Monica Lowe (Secretary)
Malaikah Rang'inya
Roxy Renait (Vice Chair)
Farideh Saffari
Leslie Supnet (Treasurer)

BOARD MENTORS

Lisa Wood
Iris Yudai

STAFF

Dana Kletke (Co-Executive Director)
Shawna Dempsey (Co-Executive Director)
Adriana Alarcón (Program and Outreach Coordinator)
Alison Davis (Administrative and Communications Coordinator)
Niamh Dooley (Program Associate)
Yvette Cenerini (Art Education Specialist)
Debbie Girard (Bookkeeper)
June Derksen (Newsletter Designer)
Sue Stewart (Newsletter Copyeditor)
Ashpreet Maan (Student Intern)

MAWA and its programs are funded by donors, members and the following:



Canada Council for the Arts
Conseil des arts du Canada



MANITOBA ARTS COUNCIL
CONSEIL DES ARTS DU MANITOBA



WINNIPEG ARTS COUNCIL





MAWA staff, left to right: Co-Executive Director Shawna Dempsey, Program Associate Niamh Dooley, Administrative and Communications Coordinator Alison Davis, Program and Outreach Coordinator Adriana Alarcón, Bookkeeper Debbie Girard, Intern Ashreet Maan, Co-Executive Director Dana Kletke and Art Education Specialist Yvette Cenerini. Photo by Lorri Millan

heads up

JUNE

- | | |
|------------------------------|---|
| All June | Online Exhibition
<i>From Within</i> by IRAMP graduates |
| TBA | Artist Mothers
<i>plein air</i> drawing, locations TBA |
| Fri, June 3, 12-1 pm | First Friday Lecture online + at MAWA
Suzanne McLeod: <i>Mindimooyenh: Indigenous Women Warrior-Artists</i> |
| Fri, June 3, 6-8 pm | Opening at MAWA
<i>Loose Ends</i> , FMP Graduate Exhibition (continues Wed.-Fri. until June 23) |
| Sun, June 5
12:30-6 pm | Field Trip to Narcisse Snake Dens
<i>rescheduled from May</i> |
| Wed, June 15
6:30-7:30 pm | Artist in Residence Artist Talk at MAWA
Tara Lynn MacDougall (Montreal) |
| Sat, June 18
12:30-6 pm | Field Trip to Brokenhead Wetland Interpretive Trail |



Artist in residence Suiling Yan delivered her artist talk from one of MAWA's new, comfy orange chairs, May 2022. Come try one yourself!

JULY

- | | |
|------------------------------|--|
| All July | Tiny Gallery at MAWA:
Sarah Paradis |
| Wed, July 13
6:30-7:30 pm | Artist in Residence Artist Talk at MAWA
Tomoko Inagaki (Osaka and Kobe, Japan) |

AUGUST

- | | |
|-----------------------------|--|
| Fri, Aug 5, 4 pm | Deadline to apply for MAWA Artist in Residence Program 2023 |
| Wed, Aug 10
6:30-7:30 pm | Artist in Residence Artist Talk at MAWA
Estelle Chaigne (Rennes, France) |
| Thurs, Aug 25 | Exhibition
<i>From Within</i> , IRAMP Graduate Exhibition AGSM, Brandon (continues until Oct 15) |

SEPTEMBER

- | | |
|----------------------|--|
| All Sept | Tiny Gallery at MAWA:
Francine Martin |
| Fri, Sept 2, 12-1 pm | First Friday Lecture online + at MAWA
Riva Symka |
| Sat, Sept 10, 1-4 pm | Workshop at MAWA
Essentials of Mentorship |